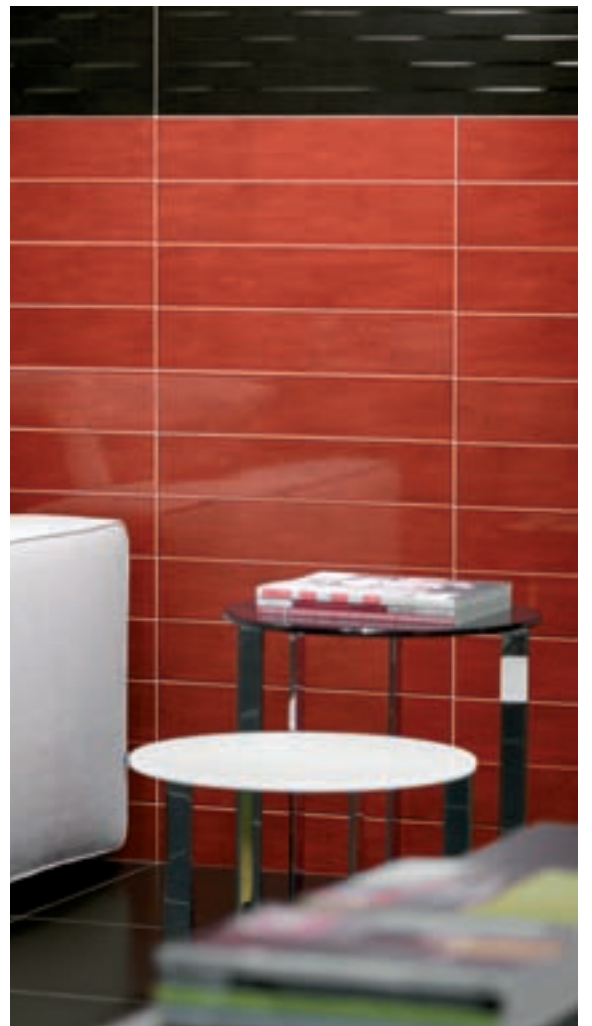
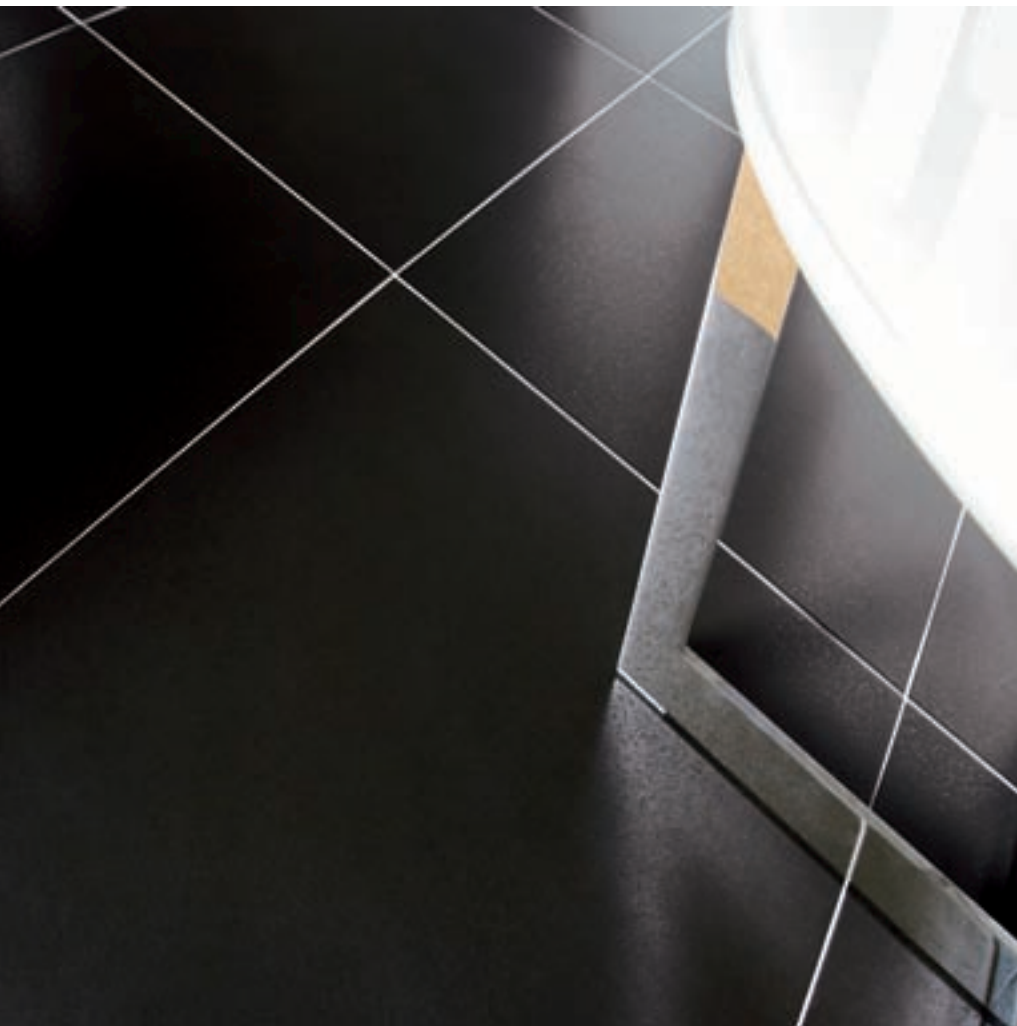




# x-perience





# x-perience





# x-perience



# rivestimenti wall tiles | revêtements | Wandfliesen | revestimientos | отделка

Pasta bianca | white body | pâte blanche | Weißer Scherben | Pasta blanca | белая паста



**29889 Panay**  
20x50



**29890 Shanghai**  
20x50



**29891 Canton**  
20x50



**29893 Rabat**  
20x50



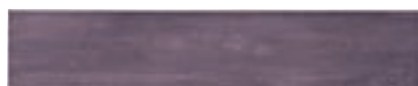
**30191 Shanghai**  
10x50



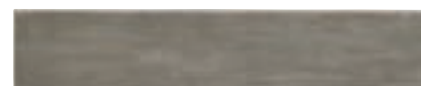
**30202 Canton**  
10x50



**32159 Panay matt**  
20x50



**30204 Dalian**  
10x50



**30209 Samar**  
10x50



**32160 Rabat matt**  
20x50



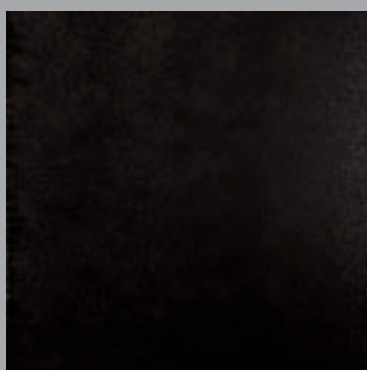
**30207 Ceylon**  
10x50



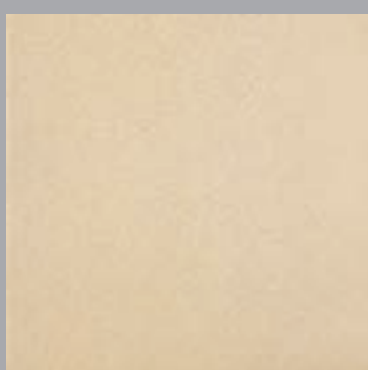
**30210 Giza**  
10x50

# pavimenti floor tiles | sols | Bodenfliesen | pavimentos | половое покрытие

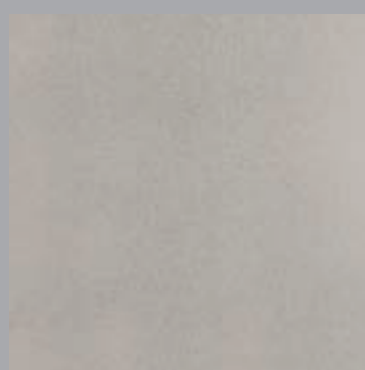
Gres fine porcellanato | fine porcelain stoneware | grès cérame fin | Feinsteinzeug | gres fine porcelánico | тонкий керамогранит



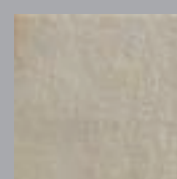
**31591 Matrix black**  
50x50



**31594 Matrix ivory**  
50x50



**31593 Matrix grey**  
50x50



**32402 Keope**  
20x20



**32164 Assuan**  
20x20



**32166 Luxor**  
20x20

# xperience



**29892 Dakar**  
20x50



**30203 Dakar**  
10x50



**30206 Giava**  
10x50



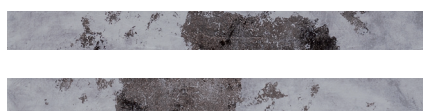
**30205 Nairobi**  
10x50



**30208 Kampala**  
10x50



**30512 listello Tai Oro**  
4,5x50



**35158 listello Tai platino**  
4,5x50



**30511 listello Xiamen oro**  
4,5x50



**30510 listello Xiamen platino**  
4,5x50



**30517 listone Kasai**  
20x100



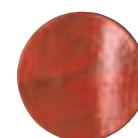
**30518 listone Kasai + idrogetto**  
20x100



**30515 inserto Xiamen oro**  
Ø15



**30514 inserto Xiamen platino**  
Ø15



**30519 inserto Kasai**  
Ø15

## pezzi speciali special pieces | pièces spéciales | Formteile | piezas especiales | специальные изделия

Pasta bianca | white body | Weißer Scherben | pâte blanche | Pasta blanca | белая паста

Serie completa | complete series | Série complète | Vollständige Serie | Serie completa | полная серия



**Battiscopa**  
9,8x50